

Image-R

Facade Inspection
Exterior Thermography
Leak Detection

Faster and safer façade inspections:

- <50 pounds total machine weight
- 25 minute setup; 120 fpm vertical speed
- Crew of 2 executes >10 drops per day

Superhuman fields of view and image quality:

- Megapixel stabilized cameras
- Multiple infrared cameras
- Fully storable output for records

Our rigging methods ensure a dependable run every time

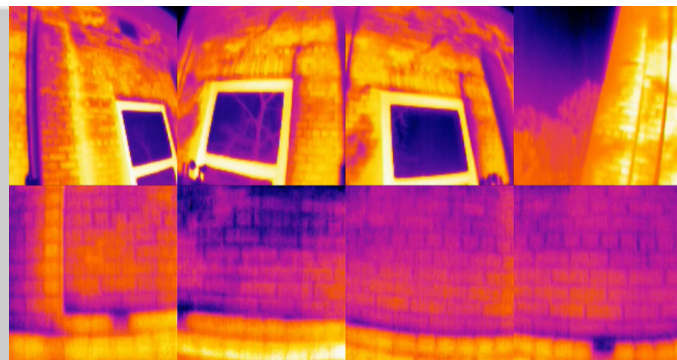
- No invasive anchors, sidewalk shed, or scaffolding; permitting is easy in NYC
- Highly aerodynamic and safely suspended away from the facade; no risk to property
- Customization is easy and affordable; robots can carry most imaging equipment
- More data of higher quality is subject to more rigorous analytics

Regulatory inspections no longer need to be ordeals;
Image-R will help foresee potential issues before they become expensive problems.

Winner of NYC Department of Buildings' Innovation Challenge

Services

- Complete facade inspection
- Renovation and repair planning
- Insulation efficiency survey
- Construction progress evaluation
- Exterior leak source tracing
- 3D exterior mapping



We provide full engineering services for custom needs from design to fabrication to electronics to testing and operation
Multiple U.S. and Overseas patents filed, issued, and pending